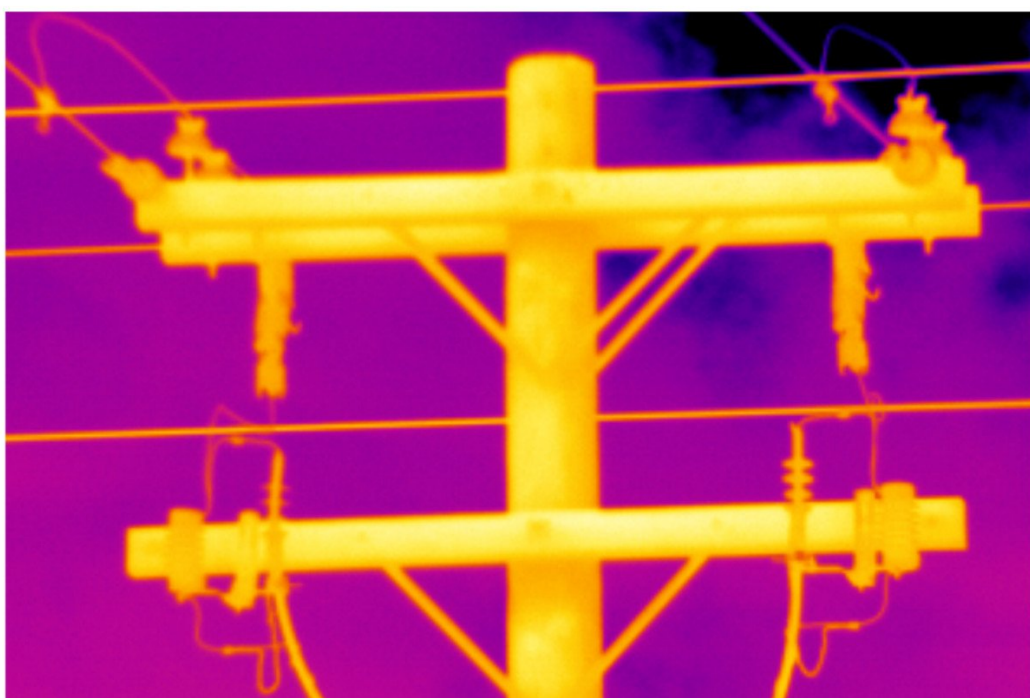
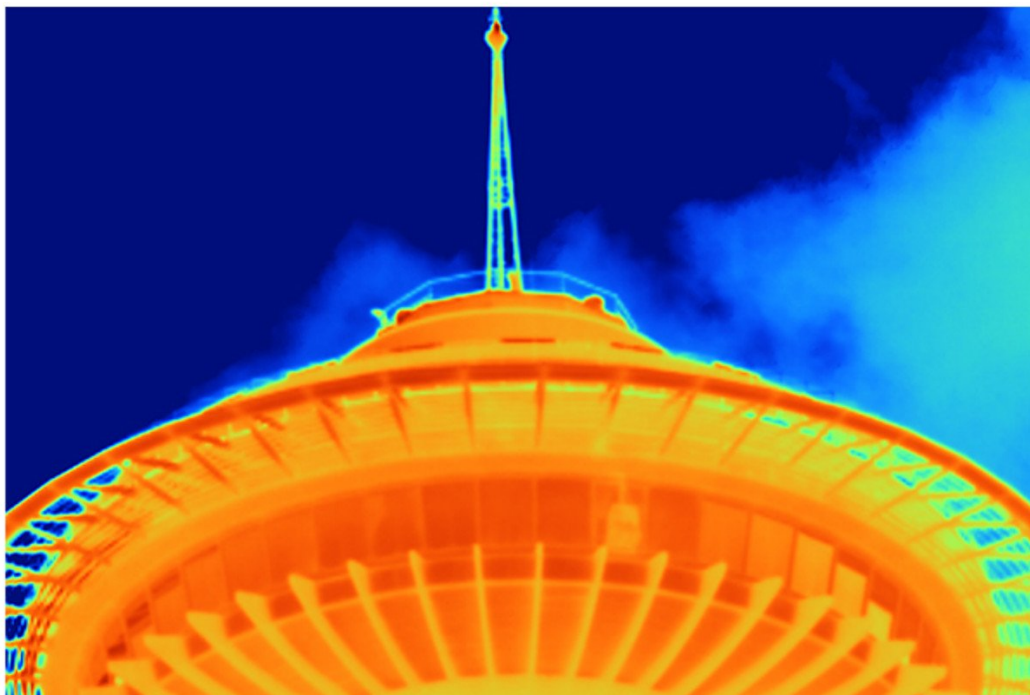


TECHNICAL DATA

Smart Infrared 4x Telephoto Lens





Product overview: Smart Infrared 4x Telephoto Lens

View your target magnified 4 times more than a standard lens while staying on the ground or a safe distance away. A 4x telephoto lens can help identify a potential issue in your equipment, even when your target is as tiny and distant as a failed splice on a high electrical line or an overheated refractory on a tall flare stack.

- Avoid the hassle of sending in your camera to calibrate with the lens - with smart lenses you can just attach the lens to any compatible camera and start taking images.
- This lens includes a patent-pending lens attachment system that holds the lens securely in place, reducing lens wobble.
- Made of 100% diamond-turned germanium with an engineered coating, the most efficient available material to transmit energy to the detector.

Compatible with TiX580, TiX501, Ti480 PRO, Ti401 PRO

Specifications: Smart Infrared 4x Telephoto Lens

Description		
IFOV (spatial resolution)	Ti401 PRO / Ti480 PRO	0.17 mRad
	Ti300+	0.34 mRad
	TiX501 / TiX580	0.17 mRad
Field of view	6.0u00b0 H x 4.5u00b0 V	
Focus distance	1.5 m (approximately 5 ft)	

Ordering information



FLK-LENS/4XTELE2

For use with the TiX580, TiX501, Ti480 PRO, Ti401 PRO Infrared Cameras.

Fluke. *Keeping your world up and running.®*

Fluke Corporation
PO Box 9090, Everett, WA 98206 U.S.A.

For more information call:
In the U.S.A. (800) 443-5853
In Canada (800) 36-FLUKE
From other countries +1 (425) 446-5500
www.fluke.com

©2025 Fluke Corporation.
Specifications subject to change without notice.
01/2025

**Modification of this document is not permitted
without written permission from Fluke Corporation.**